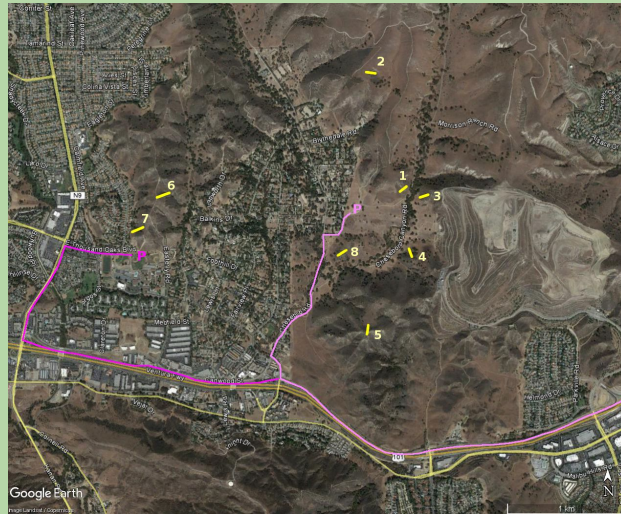




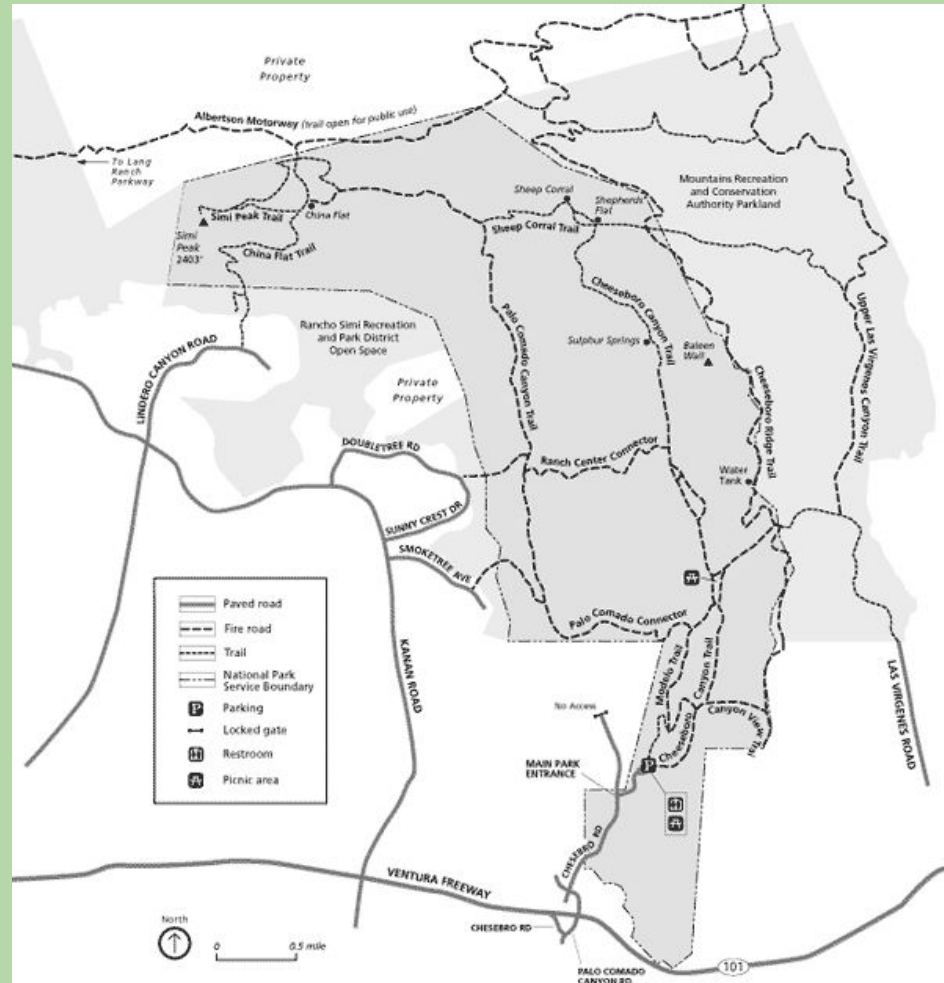
Leidy Tercero-gio, Jessica Mercado, Brandon LaBeet, Stephanie Wilmot

BACKGROUND

- Scott Eckhardt's hypothesis
- CSS expansion into exotic grasslands where there was no fire history



NAMED TRAILS MAP



HYPOTHESIS

Null Hypothesis: There is no significant difference in the floristic composition (diversity) of CSS as compared to when Scott Eckhardt performed his transects in these areas.

Alternative Hypothesis: There is a significant difference in the floristic composition (diversity) of CSS as compared to when Scott Eckhardt performed his transects in these areas.

METHODS

- 10 m transect with 1 m intervals
- GPS application - Status and Toolbox





Avena
Fatua

Baccharis
pilularis



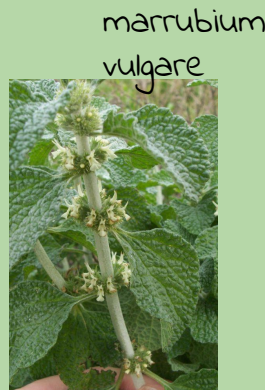
Bromus
Diandrus



Salvia leucophylla



Artemisia
Californica



marrubium
vulgare

SPECIES ENCOUNTERED



rhamnus
ilicifolia



Artemisia
dracunculus



Brassica
Nigra



malacothamnus
fasciculatus



isocoma menziesii



Lupinus
Citrinus



Bromus
Sterilis



Erodium
Cicutarium



Phacelia
Hubbii



erigogonum
cinereum

RESULTS - ATTEMPTED CHI-SQUARE

[illegible]

RESULTS: TRANSECT 6

Spring 2017

Species	Totals
Brassica nigra	5
Erodium cicutarium	3
Bromus sterilis	7
Avena fatua	3
Lupinus citrinus	2
Phacelia hubbyi	1

Eckhardt's data

Species	Totals
Eriogonum cinereum	13
Marrubium vulgare	27
Artemisia californica	12
Haplopappus venetus	1
Salvia leucophylla	9
Malacothamnus fasciculatus	2

RESULTS: TRANSECT 7

Spring 2017

Species	Totals
Avena fatua	4
Rhamnus ilicifolia	1
Bromus sterilis	3
Phacelia hubbyi	3
dirt	1
Brassica nigra	7
Bromus diandrus	3

Eckhardt's data

Species	Totals
Eriogonum cinereum	22
Haplopappus venetus	2
Salvia leucophylla	10
Malacothamnus fasciculatus	5
Artemesia californica	15

RESULTS: TRANSECT 2

Spring 2017

Species	Totals
Artemisia dracunculus	1
Salvia leucophylla	6
Brassica nigra	2
Rhamnus ilicifolia	3
Unidentified grass	4
dirt	1
Baccharis pilularis	1
Bromus diandrus	1
Avena fatua	3

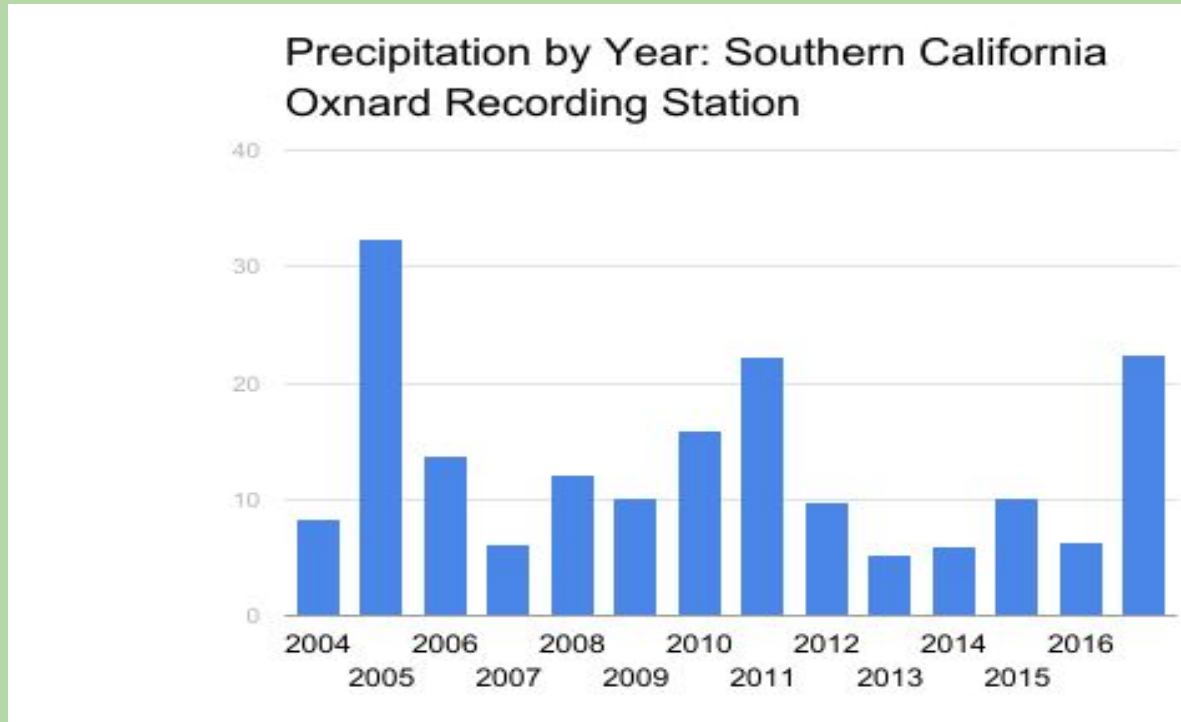
Eckhardt's data

Species	Totals
Haplopappus venetus	122
Salvia leucophylla	40

DISCUSSION

- A 2x2 chi square test was attempted for the cheesboro assessment area but no significant correlating data to Eckhardt's study could be found.
- Environmental factors believed to be responsible for the significant difference in plant populations include: Seasonal difference, precipitation difference and wildfire occurrence.

DISCUSSION: PRECIPITATION



DISCUSSION: WILDFIRE

- 2006 Ventura County experienced severe Wildfires in which burned 162,702 acres of brush in areas neighboring transect zones. 2009 and 2013 also had significant fires in Ventura County that burned 17,500 and 28,000 acres respectively.
- No similar wildfire events have occurred in 2017.



CONCLUSION

- We reject the null hypothesis
- For future research on this sites we will need to try different data collection methods in order to get significant results.

