

Part I: SAS Foundation Depot

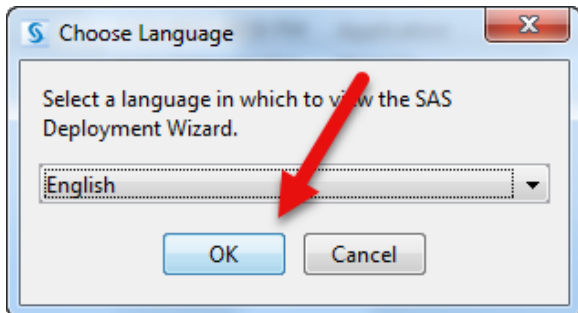
Instructions: This installation guide provides step-by-step instructions that are specifically prepared for shipping release - SAS 9.4 TS1M4, Rev 940_17w04. Future releases may vary from these instructions.

SAS Foundation Depot includes Base SAS, SAS/ETS, SAS/GRAPH, SAS/IML, and SAS/OR.

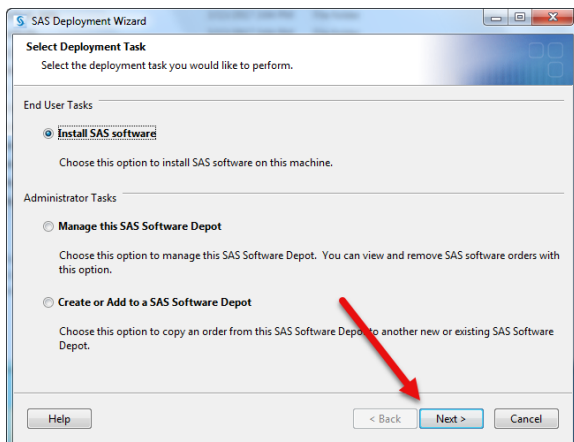
After installing SAS Foundation Depot products, go to the SAS FClient Depot to installed additional SAS products. See page 8 for product information.

Note: SAS requires an annual Installation Data File. This file is made available every year on Software Depot, but to retrieve this file, you must select “Your Account/Orders” and view your SAS summary. You will then click the DOWNLOAD button and from the Secure Download Manager (SDM), you will locate and download the Installation Data File. You DO NOT download SAS software again! Before running Renew SAS 9.4 Software, go to “C:\Program Files\SASHome\licenses” directory and replace the previous year’s Installation Data File.

1. Open the “SAS Foundation Depot” Directory and Right-Click the SETUP.EXE file and select “Run as Administrator”.
2. Choose Language: **English**. Click OK.

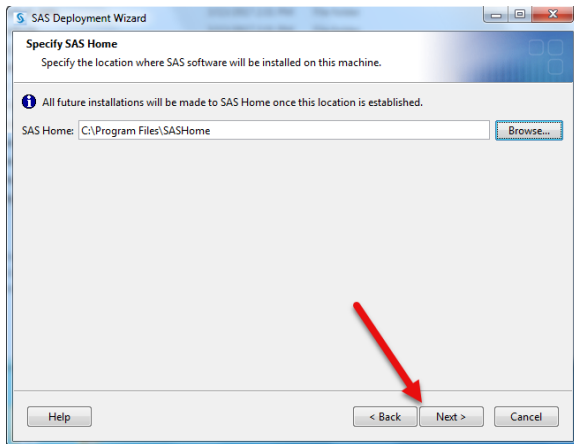


3. Select Deployment Task: **Install SAS software**. Click NEXT.

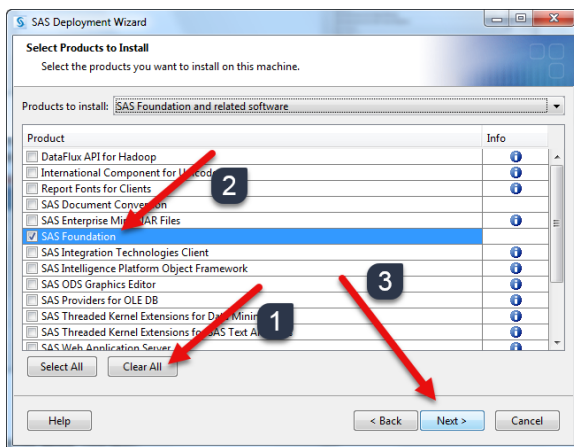


SAS 9.4 Deployment Wizard

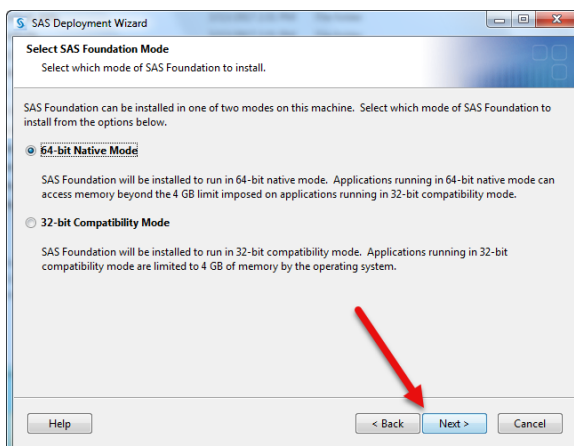
4. Specify SAS Home. Click NEXT.



5. Select Products to Install. **SAS Foundation and Related Software.** Click "CLEAR ALL" and then CHECK "SAS Foundation". Click NEXT.

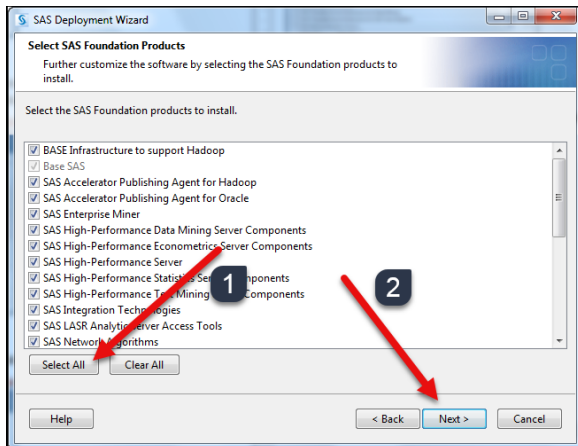


6. Select SAS Foundation Mode: **64-bit NATIVE MODE.** Click NEXT.

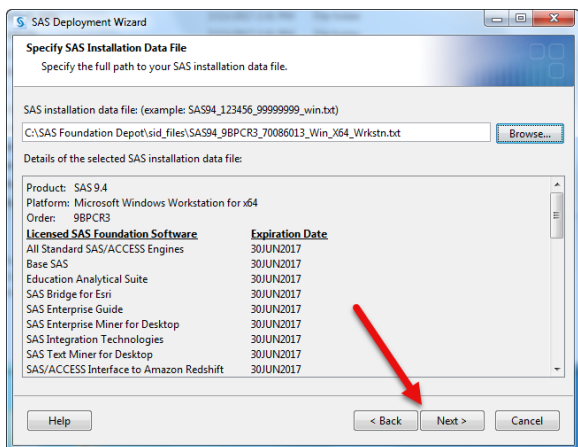


SAS 9.4 Deployment Wizard

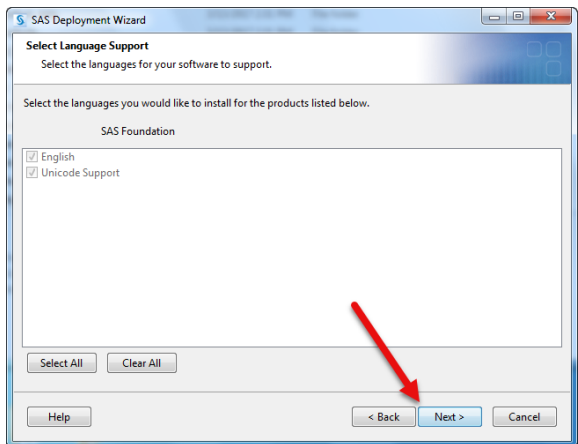
7. Select SAS Foundation Products to Install. Click **SELECT ALL**. Click **NEXT**



8. Specify SAS Installation Data File: **SAS94_9BPCR3_70086013_Win_X64_Wrkstn.txt**. This file is in the "SAS Foundation Depot\sid_files\" directory and is only good for the 2016-2017 Academic Year. Click **NEXT**.

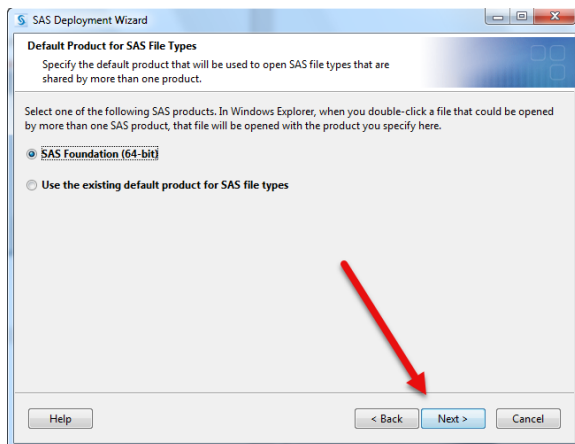


9. Select Language Support: English. Click **NEXT**.



SAS 9.4 Deployment Wizard

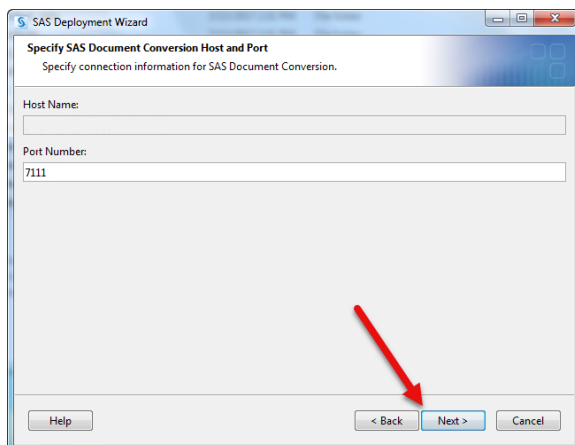
10. Default Product for SAS File Types. Click NEXT.



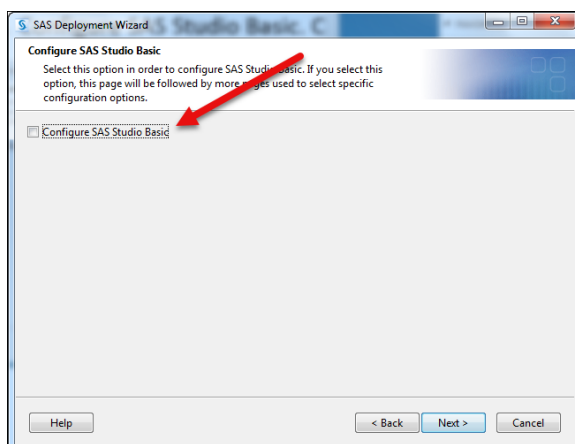
11. Specify SAS Document Conversion Host and Port. Click NEXT.

Host Name: Default is specific to the workstation

Port Number: 7111

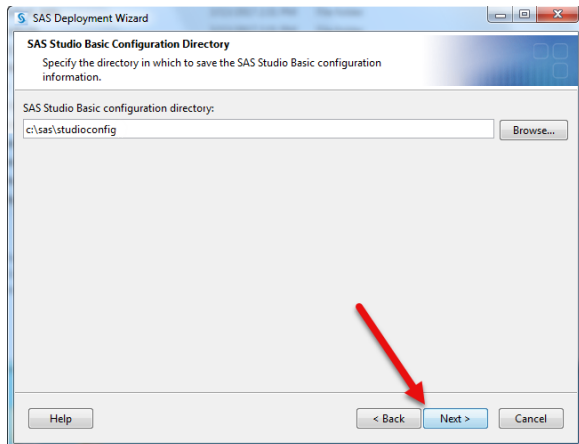


12. Configure SAS Studio Basic. Uncheck "Configure SAS Studio Basic" and **SKIP Steps 13-16, UNLESS YOUR INSTRUCTOR INDICATES OTHERWISE.** Click NEXT.



SAS 9.4 Deployment Wizard

13. SAS Studio Basic configuration directory. **C:\sas\studioconfig**. Click NEXT.

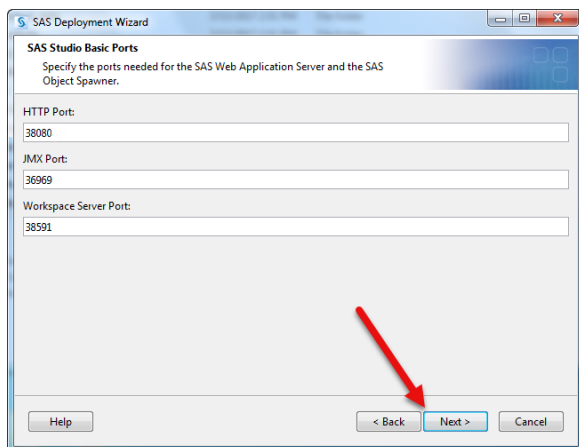


14. SAS Studio Basic Ports. Click NEXT.

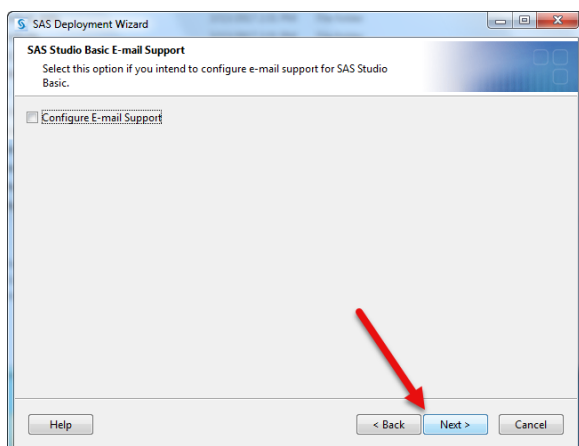
HTTP Port: 38080

JMX Port: 36969

Workspace Server Port: 38591



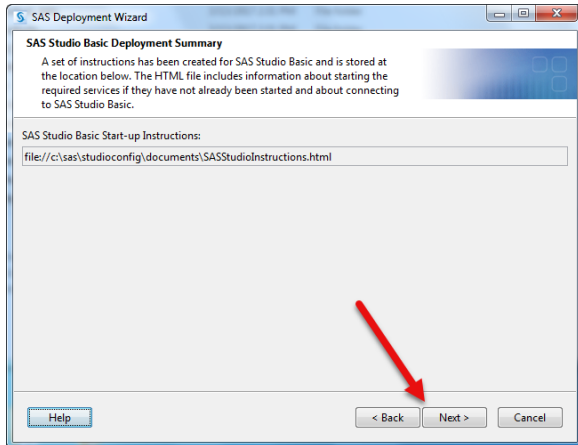
15. SAS Studio Basic E-Mail Support. **Do NOT check the box to Configure E-mail Support**. Click NEXT.



SAS 9.4 Deployment Wizard

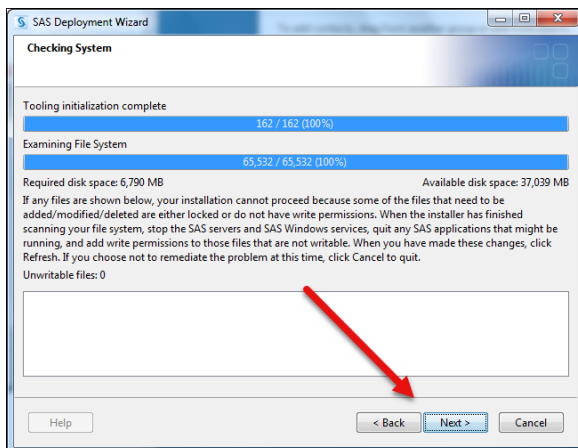
16. SAS Studio Basic Deployment Summary.

file://c:\sas\studioconfig\documents\SASStudioInstructions.html Click NEXT.

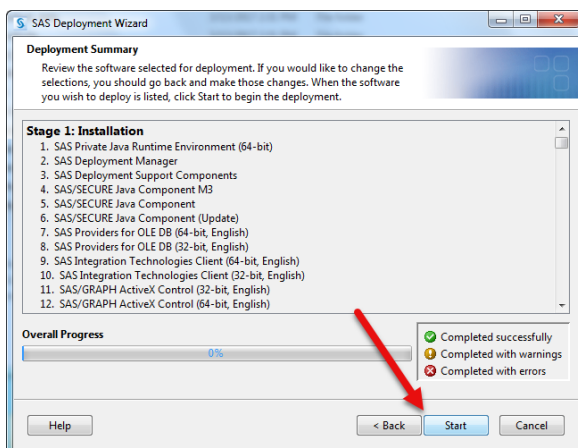


If you unchecked "Configure SAS Studio Basic", your next screen prompt will be "Checking System".

17. Checking System. Click NEXT.

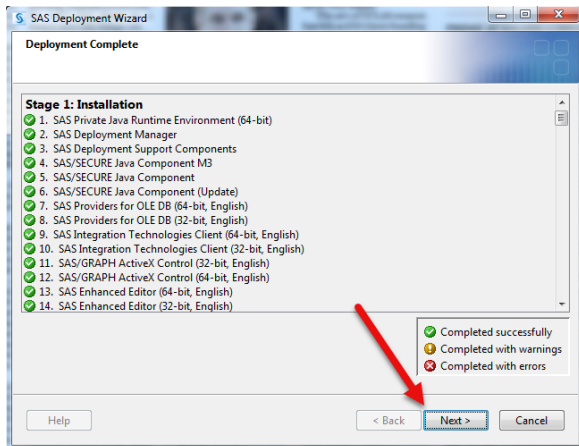


18. Deployment Summary. There are 158 steps. Click START.

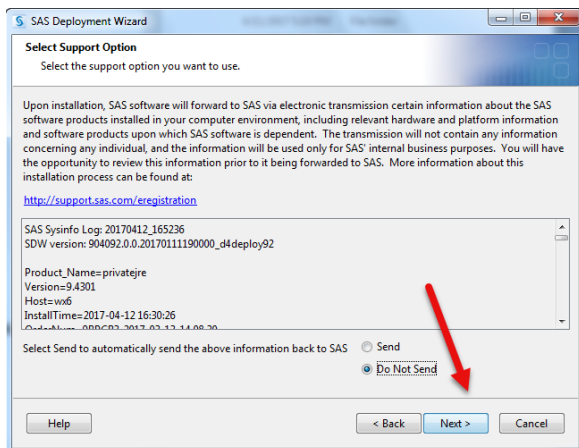


SAS 9.4 Deployment Wizard

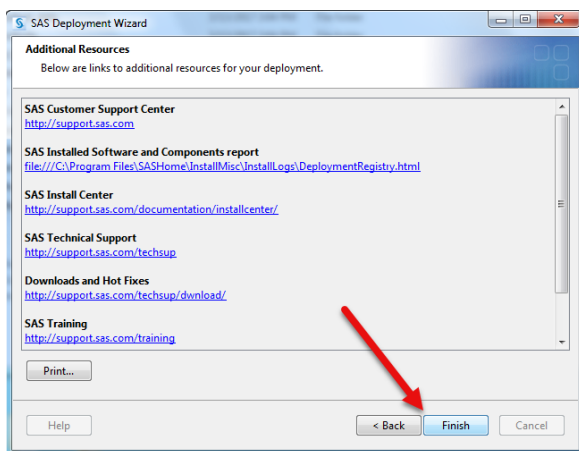
19. Deployment Complete. Click NEXT.



20. Select Support Option. Click NEXT.



21. Additional Resources. Click FINISH.



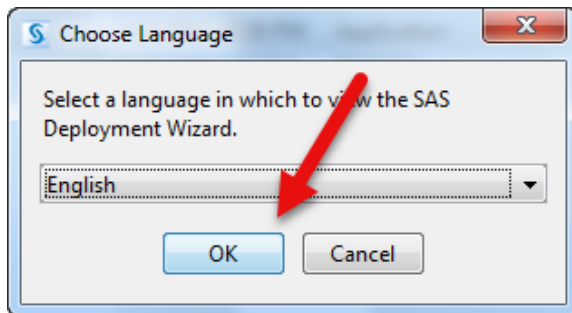
22. This concludes Part I: SAS Foundation Depot Install.

23. Now begin Part II: SAS FClient Depot Install.

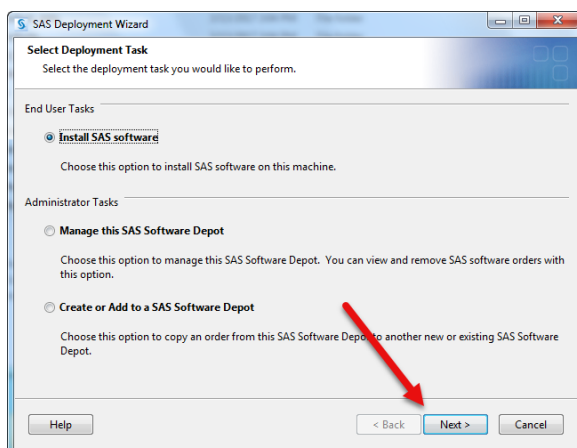
Part II: SAS FClient Depot

Instructions: This guide provides step-by-step instructions that are specifically prepared for shipping release - SAS 9.4 TS1M4, Rev 940_17w04. Future releases may vary from these instructions. SAS FClient Depot will enhance the SAS Foundation Depot installation with Enterprise Miner, Text Miner, SAS/Graph Active X, Enterprise Guide, Microsoft Office Add-in, Simulation Studio and IML Studio. SAS Studio is also available, however, these instructions do not include its installation. Power and Sample Size is now included with SAS/STUDIO.

1. Open the "SAS FClient Depot" Directory and Right-Click the SETUP.EXE file and select "Run as Administrator".
2. Choose Language: **English**. Click OK.



3. Select Deployment Task: **Install SAS software**. Click NEXT



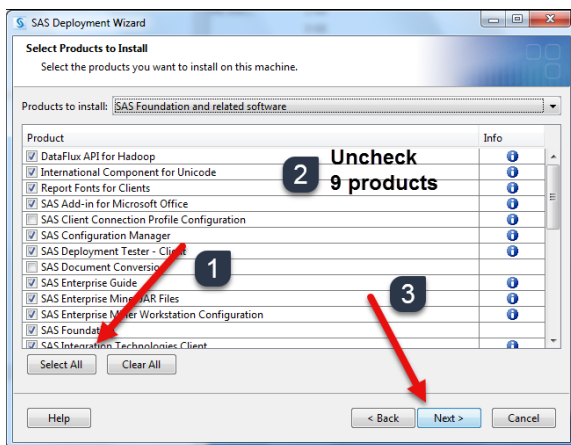
SAS 9.4 Deployment Wizard

4. Products to Install: “SAS Foundation and related software”.

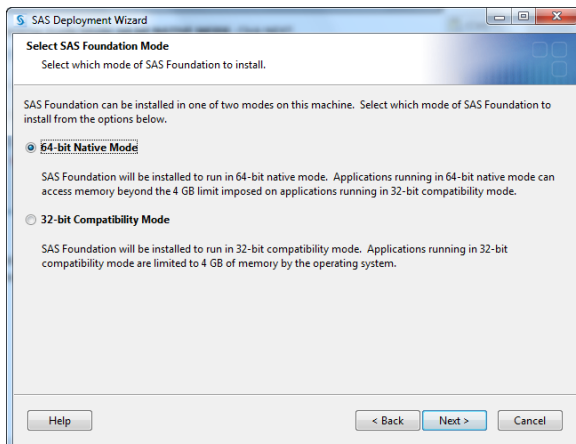
Select Products to Install: **1) SELECT ALL. 2) UNCHECK Nine (9) products list below.**

- a. SAS Client Connection Profile Configuration
- b. SAS Document Conversion
- c. SAS Intelligence Platform Object Framework
- d. SAS Management Console
- e. SAS Studio – Single User
- f. SAS Web Application Server
- g. SAS/GRAPH Java Applets for Web Servers (Advanced)
- h. SAS/SECURE Client Components
- i. SAS/SECURE Toolkit Libraries from RSA (R)

Click NEXT.

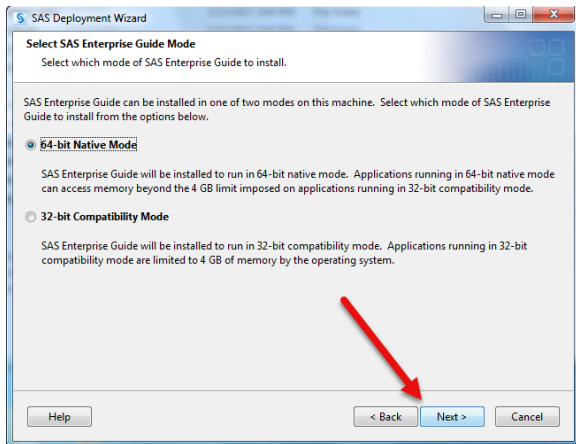


5. Select SAS Foundation Mode. Select 64-bit Native Mode.

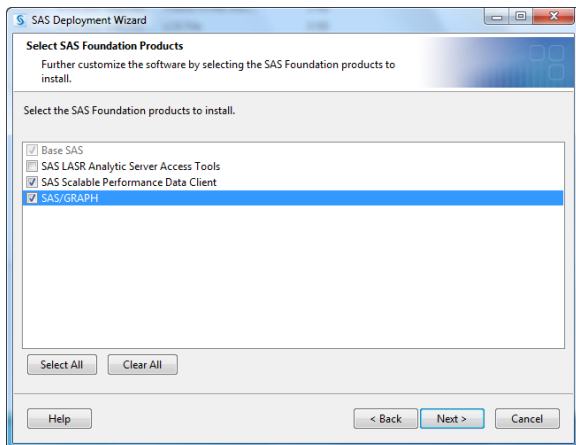


SAS 9.4 Deployment Wizard

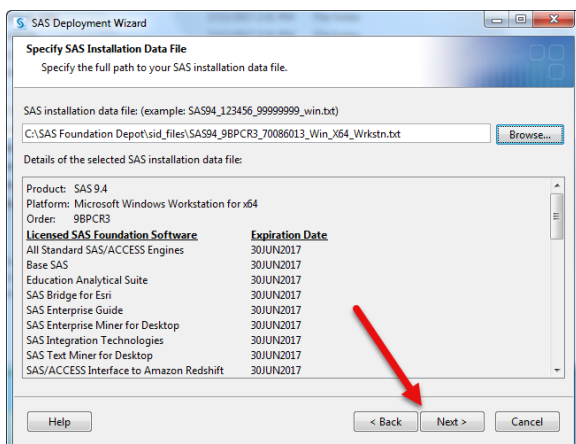
6. Select SAS Enterprise Guide Mode: **64-bit NATIVE MODE**. Click NEXT.



7. Select SAS Foundation Products. Uncheck "SAS LASR Analytic Server Access Tools". Click NEXT.

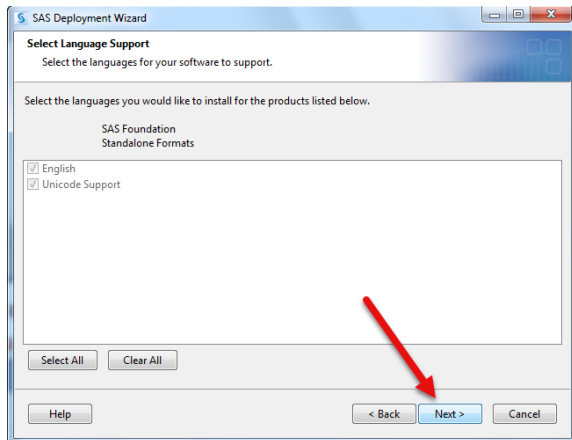


8. Specify SAS Installation Data File: **SAS94_9BPCR3_70086013_Win_X64_Wrkstn.txt**. This file is in the "SAS Foundation Depot\sid_files\" directory. Click NEXT.

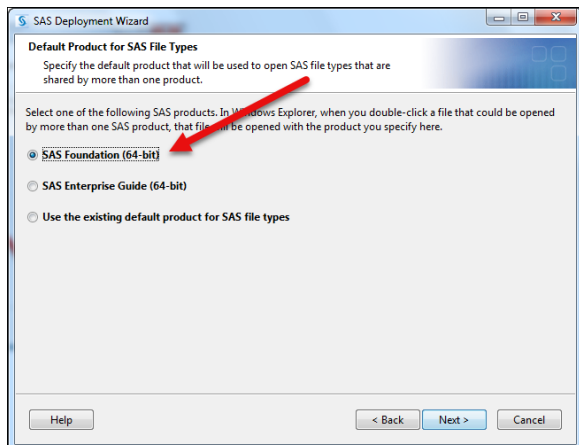


SAS 9.4 Deployment Wizard

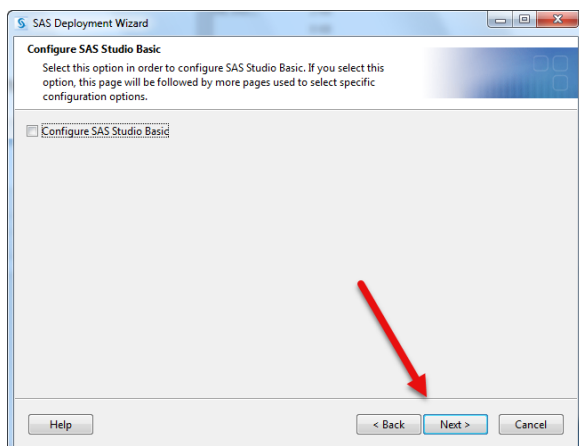
9. Select Language Support: **English**. Click NEXT.



10. Default Product for SAS File Types: **SAS Foundation or SAS Enterprise Guide (64-bit)**. Click NEXT.

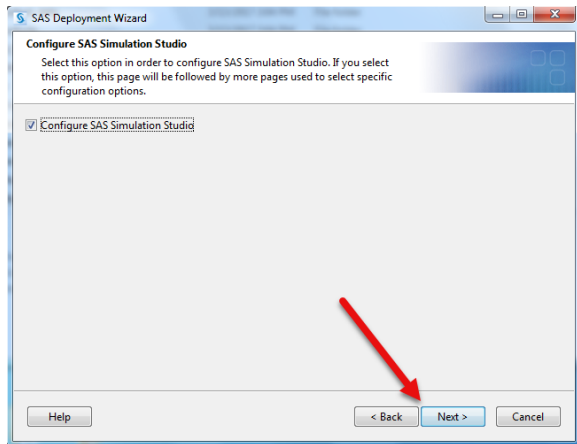


11. Configure SAS Studio Basic. Uncheck "Configure SAS Studio Basic".
UNLESS YOUR INSTRUCTOR INDICATES OTHERWISE. Click NEXT.

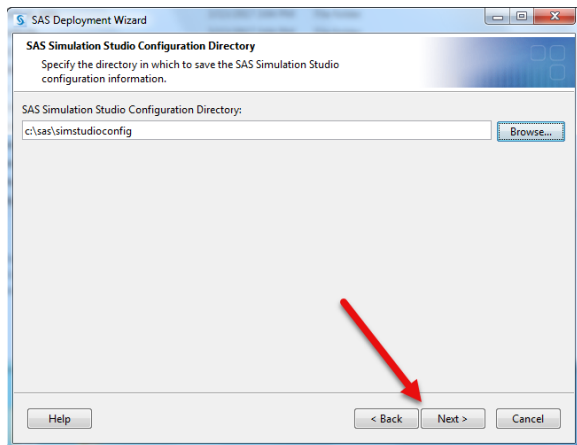


SAS 9.4 Deployment Wizard

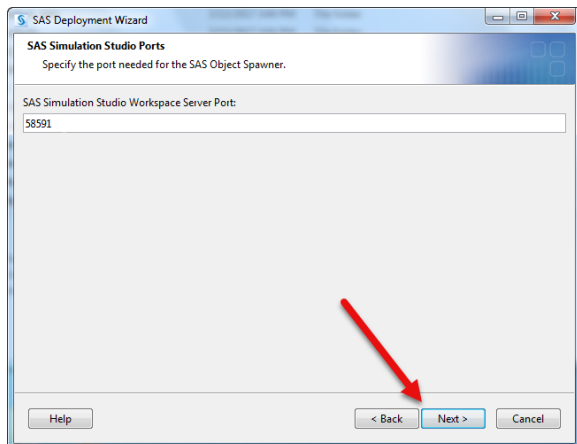
12. Configure SAS Simulation Studio. Click NEXT.



13. SAS Simulation Studio Configuration Directory: c:\sas\simstudioconfig. Click NEXT.

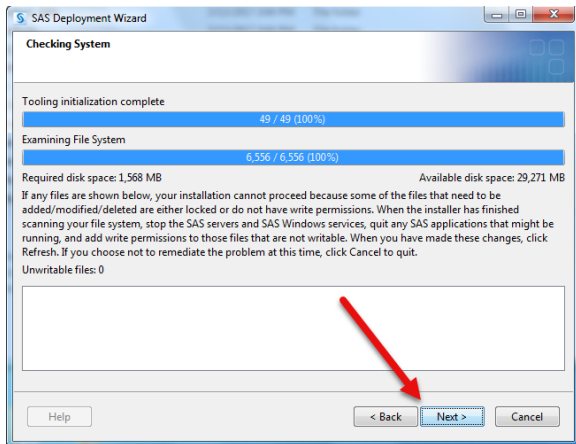


14. SAS Simulation Studio Ports. Click NEXT.

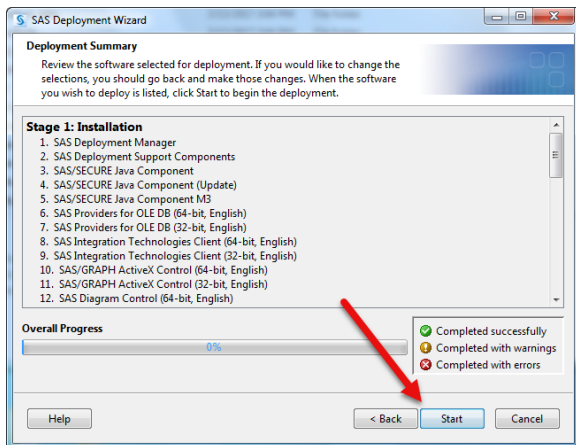


SAS 9.4 Deployment Wizard

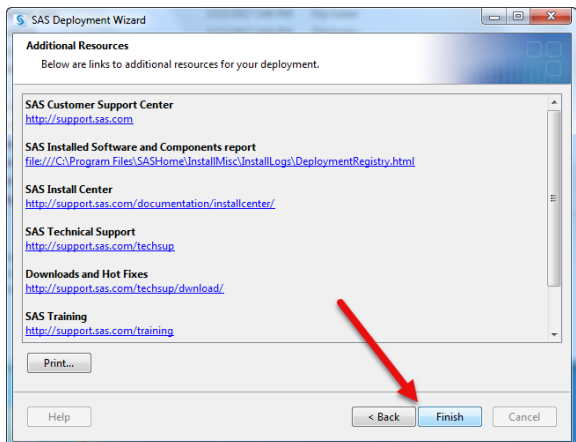
15. Checking System. Click NEXT.



16. Deployment Summary. There are 166 steps. Click START.



17. Additional Resources. Click FINISH.



18. SAS Installation is now complete.