

Adobe Photoshop 7.0

The following instructions will direct you to clone a saved image, so that it can be used as an image on a website.

Part I will briefly review how to download an image from the Internet. For this example, we will use specific images.

Part II consists of two ways to clone an image using the Clone Stamp Tool and Wand Tool, as well as cloning an object from an additional image.

These instructions are for those who are familiar with the PC systems.

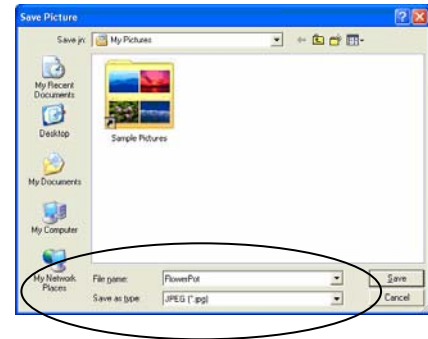
In order to complete this task, you will need a PC computer, the Internet and the Adobe Photoshop 7.0 program.

Part I: Downloading an Image

1. Open the **Internet**.
2. Type **http://www.gent-family.com/ouryardandgarden.html** in the web address bar.
3. Double left-click on this image.



4. Right-click on the image. A menu should drop down.
5. Select **Save Image As**.
6. Save the image as **jpeg**. Give the file a recognizable.

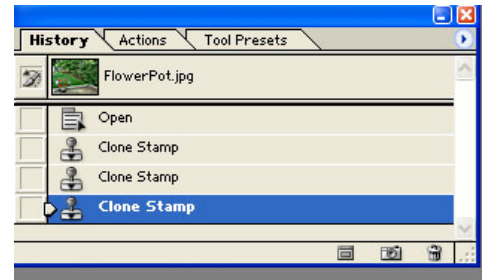


7. Minimize the Internet because it will be useful later.

Part II: Cloning a Saved Image

Clone Stamp Tool

*NOTE: To **undo** any previous step, go to the **History** menu located on the right of the screen and select the desired step. Do not lock the image.*



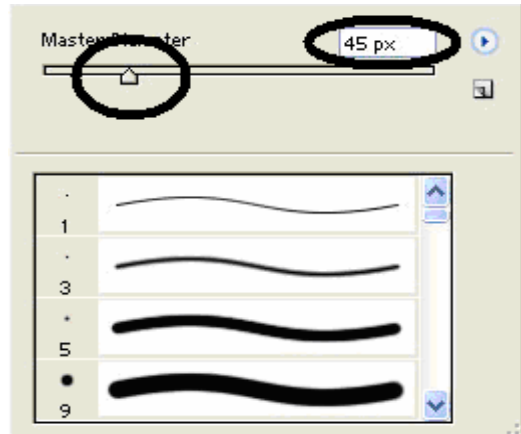
1. Open Adobe Photoshop 7.0
2. Open the saved image.



3. Select the **Clone Stamp Tool**.



4. **Right-click** on the image. A box should appear.



5. Choose size **45** for the cursor. Leave the texture options alone.

6. Place the cursor on the left border of the image of the **flowers on the stand**.

Now you are ready to clone!



7. **Press the Alt key and left-click** on the mouse. A cursor will appear.



8. Release all buttons. The cursor disappears.

9. Place the cursor where the cloned image is desired.

Note: When you begin to clone, the left side of the image will appear first.

10. **Left-click** and **hold**.
Another cursor will appear on the original image.

You will focus on this cursor while cloning the image in the desired area.



11. Move the cursor around the desired area. The cloned image will begin to appear.

Hint: Begin cloning by tracing the outline of the original image. Keep the cursor within the outline.



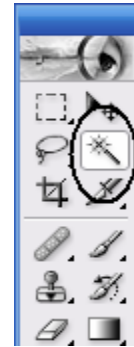
12. Fill in the rest of the image by using steps #9-11.



13. **Save** the edited image.

The Wand Tool

1. Select the **Wand Tool**.



2. Place cursor on the yellow flower on the right side of the image.



3. Hold the **shift key** and **left-click** on the flower. Do not release.

4. Click more times in different areas on the flower until completely highlighted.



5. Release all buttons.

6. Select the **Move Tool**.



7. Place the cursor on the highlighted flower.

8. **Hold the Alt key and left-click** on the image.

Note: Not holding the Alt key will result in a gap in the image.



9. Drag the highlighted flower to the desired location and release. The clone should be highlighted.



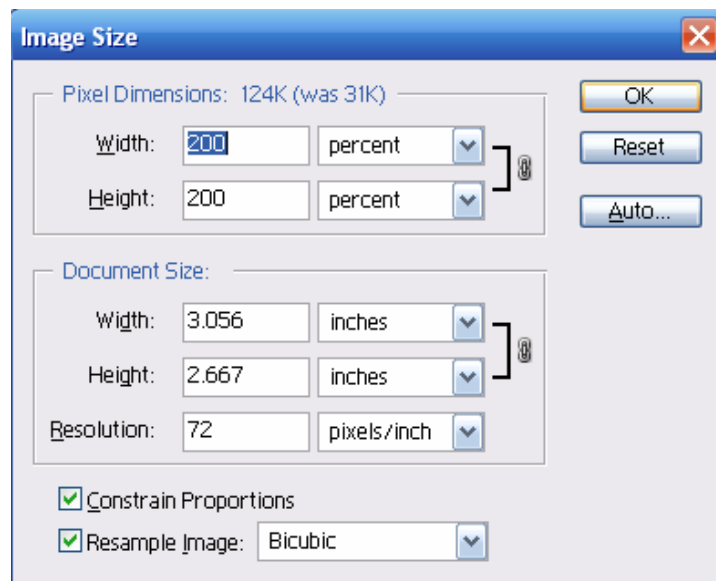
10. **Repeat** steps #7-9 to clone again. Continue as many times as desired.



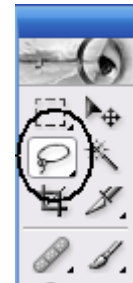
11. Save the edited image.

Using an Additional Image

1. Maximize the Internet.
2. Type **http://scd.mm-b1.yimg.com/image/493059899** in the web address bar.
3. Repeat steps #3-6 in Part I on page 2.
4. Open the new saved image in Adobe Photoshop 7.0.
5. Maximize the bunny image.
6. Select **Image** at the top menu bar.
7. Select **Image Size**. A menu will appear. Enlarge by 200 percent.



8. Save the resized image.
9. Close the bunny image and reopen it. The bunny should be larger.
10. Select the **Lasso Tool**.



11. Place the cursor on the border of the rabbit in the new image.
12. **Left-click** and hold while carefully tracing the outline of the rabbit. Do not release.
13. Release the left-click when done. The rabbit's silhouette will be highlighted.



14. Select the **Move Tool**. Refer to page 7 for toolbar.

15. **Left-click** and **drag** the highlighted image directly onto the first page with the cloned flowers.



16. **Release the left-click** when the image is in the desired location.



17. **Repeat** steps #7-9 on page 7 to clone again.
18. Save the final image.

